



**ELEMENTS CASINO**  
VICTORIA

# DISCOVER OUR PREMIER EVENT SPACES

THE PLATINUM, GOLD,  
AND SILVER ROOMS



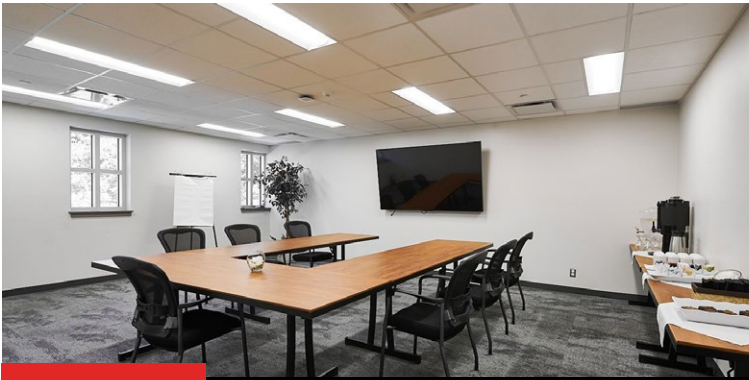


## Platinum Room



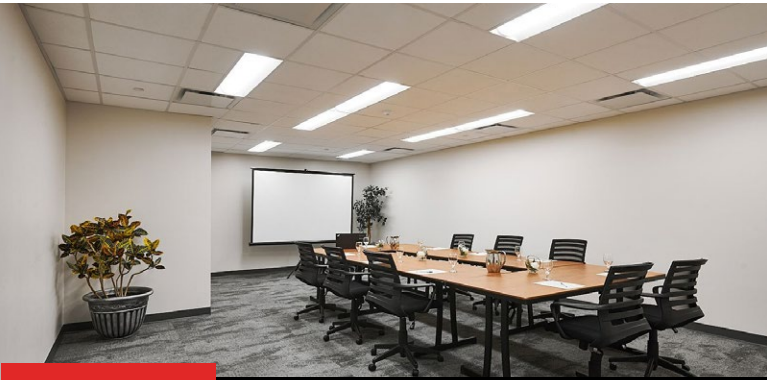
### Key Features

- Multifunctional event space ideal for large conferences and a wide range of events
- 3,995 square feet of flexible event space
- Capacity for up to 500 guests
- Full theatre style capabilities
- Built in large screen, projector, and integrated sound system
- Private lobby, pre-function waiting area for guest reception
- Dedicated catering service area
- Coat rack and storage space available



## Gold Room

420 square feet, seats up to 20 guests



## Silver Room

455 square feet, seats up to 23 guests

### Key Features

- Private boardroom style space ideal for meetings, training sessions, and small presentations
- Screen and projector are available
- Flexible room layout options
- Catering options available

## Food, Beverage & Alcohol

Food, beverage & alcohol are not permitted to be brought into the venue. Elements Casino Victoria offers in-house catering and professional bar service for events. Dining & bar service is also available in our restaurant, The Well Public House.

## ID Requirements

All Guests including organizers, vendors, attendees & entertainers—Must be 19+ and present government-issued photo ID upon entry. **Ages 19-25 years** require a 2<sup>nd</sup> piece of valid ID. Please ensure you have a current, valid photo identification for entry.



Elements Casino Victoria strives to provide full accessibility for all guests. Accessible parking spaces are marked. Guests enter the Casino through the main entrance lobby.

## FOR MORE INFORMATION

**Elements Casino Victoria**  
1708 Island Highway,  
Victoria, BC

[events@casinovictoria.ca](mailto:events@casinovictoria.ca)